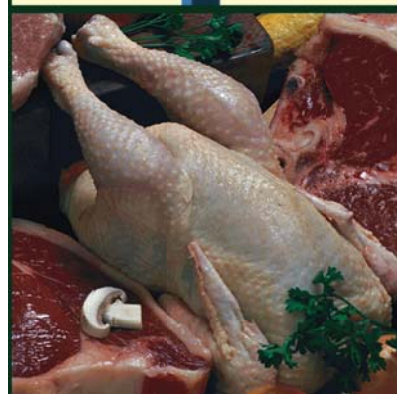


# CEDAR CREEK COMPANY PTY LTD



**TOTAL LABELLING SOLUTIONS**  
TAILORED, CUSTOMISED AND INNOVATIVE

## OUR COMPANY

Cedar Creek Company is not simply another software company, we are a specialist hardware and software solutions provider. Our core business is the development and implementation of advanced software and hardware systems including the design and manufacturing of Harsh Environment Touch Screen Computers, Weigh Label Systems, wireless mobility solutions, and advanced Print-and-Apply Label Applicators for a range of industries including but not exclusive of, the Food Processing, Manufacturing, Logistics, Health, Mining and Distribution industries.

Formed in early 1999, we have established our business on a sound footing by securing major customers in both Australia and New Zealand such as AFFCO, Amcor, Australia Meat Holdings, Bartter Enterprises, Carlton & United Breweries, ConAgra Trading, Elders International, Fonterra and Goodman Fielder. With offices in Australia, New Zealand and Chile, we have put together a professional team with many years of IT and practical experience in the Food Processing, Manufacturing, Logistics and Distribution.

**WE SPECIALISE IN DELIVERING QUALITY,  
COST EFFECTIVE AND INNOVATIVE  
SOFTWARE & HARDWARE SYSTEMS WITH  
A FOCUS ON TRACEABILITY TO KEY**

## SOFTWARE & HARDWARE SOLUTIONS

At Cedar Creek Company we pride ourselves on our skills which include business analysis, software development, project management, systems integration, hardware engineering and maintenance, implementation, training and support. Our depth of knowledge and experience in our specialist markets provide us with an edge over competitors. We understand these industries, and we have a strong record of developing innovative systems and solutions, which address their unique requirements.

In designing our systems, we have placed emphasis on real-time, automated data collection and processing, plus integration of our software with other production and office systems, ensuring that manual data handling is eliminated or minimised. Our innovative software modules and hardware are configured to our customer's exact requirements and allow for real-time interfaces with their new or existing systems for a complete integrated solution.

We provide interfaces to our customers' existing or new software systems, including production ERP and financials, to optimise integration throughout the business and to maximise the ROI and the benefits to its customers.

- Automated EAN (GS1) barcode label Print & Apply.
- Scan Pack Systems.
- Process control systems.
- Inventory management, control and distribution.
- Industrial RF wireless systems and scanning.
- Instant reporting and integration enterprise-wide.

Cedar Creek places great emphasis on building strong business partnerships with our customers, based on effective communication and thorough understanding of their needs and priorities, backed by critical 24x7 support and maintenance services. Our reputation is based on how well we maintain these partnerships.

*Cedar Creek Company Strategic Partners*



# TOTAL LABELLING

## ALSTEP



ALstep is an automatic compact-sized and low-cost label applicator for self-adhesive labels, designed to be easily integrated into existing packaging lines.

## ALRITMA



The touch screen controlled ALritma is a high performance label applicator designed to accommodate even the most demanding labelling requirements.

TURN KEY SOLUTIONS PROVIDED  
FOR YOUR INDIVIDUAL REQUIREMENTS.

## ALLINE E



ALline E is configured to apply a front & back label to elliptical or rectangular products in a single pass, generally food, cosmetic, pharmaceutical and chemical products in plastic, glass or metal bottles, pots and jars. Its basement can be fitted with two opposing side ALritma labelling heads.

MULTIPLE LABELLING HEADS, HOT FOIL PRINTING UNITS, PRODUCT CONVEYORS AND OTHER ANCILLARY DEVICES CAN BE SUPPLIED TO MEET YOUR EXACTING AND CHANGING PRODUCT REQUIREMENTS.

## ALCODE



Designed to automatically print and apply self-adhesive labels in real time "one to one" (last label printed is the label applied), the ALcode is fast, efficient and reliable.

Applicator mechanisms available to suit any application.

## MULTIPLE HEAD APPLICATOR SYSTEM



# G SOLUTIONS

## STAND ALONE LABEL APPLICATOR

As the name implies, the **Stand-Alone Applicator** is designed to stand beside an existing conveyor line and to be installed with a minimum of fuss. This model is built around a sturdy frame on a four-point base. Utilising the on board industrial PC running Cedar Creek's Applicator Software, all printing, label creation and product database requirements are contained in one stand-alone unit. These units are highly configurable and suitable for compliance labelling of cartons and pallets.

### Operation

Labels are applied via a vacuum wheel on the end of a jointed arm taking the labels from the printer and 'rolling' them gently onto the cartons or pallets to be labeled. One machine can apply either one or two labels to one side or two adjacent sides of cartons or pallet, allowing GSI compliant labelling.

## IDEAL FOR GENERIC CARTON LABELLING

### Features

- Applies one or two labels per carton in one single movement.
- Incorporates an industrial PC and uses a PLC for control.
- Product database can be stand alone or via network connection.
- Touch screen interface for product set up and control.
- Multiple label formats selectable.
- Optional automatic height adjustment.

AUSTRALIAN DESIGNED, ENGINEERED AND BUILT. YOU CAN BE ASSURED OF HIGH QUALITY MACHINERY, EXPERT LOCAL KNOWLEDGE AND DELIVERY.

## ALCODE P



ALcode P is able to print-and-apply A5 format SSCC labels onto two adjacent faces of a pallet normally front-and-side. Utilising a turntable two opposite sides (or all four) can also be labelled. The ALcode P is a highly reliable system providing quality print-and-apply in accordance with the EAN 128 standard. Operations up to 120 pallets/hr.

Alcode P comprises of a printing system, the tri-axial applicator and the protection cabinet.

- Designed to apply both labels with only one stop of the pallet.
- Tri-axial movement system which enables quick and accurate positioning of each label.
- Pallet loads of slightly differing dimensions can be labelled without the need for further adjustment.
- "Missing Label Detector" and a "Barcode Scanner" can be incorporated to detect the presence of the label on the pallet, and initiate a second cycle to compensate if necessary, or a signal to stop the production line.

PRODUCT LABELLING IS INDEED ONE OF MOST CRUCIAL ASPECTS OF PACKAGING. THIS IS WHY ALCODE P PALLET LABELLING SYSTEMS ARE IN USE WITHIN THE WORLD'S MOST RENOWNED FMCG COMPANIES.

**Alcode P** single axis also available if one label only is required or utilised in pairs for two forklift entry side labels along one pallet conveyor.



## HARSH ENVIRONMENT TOUCH SCREEN COMPUTERS



- Designed to operate in rugged environments (wet/dusty/vibration).
- Rugged stainless steel enclosure, IP66 rated.
- Pentium M or Celeron M processor.
- 40gb-HDD, 512MB RAM.
- 1 xRS232/485, 3 x RS232, 1 x USB, 1 xLAN.
- Custom I/O options.
- Ease of use by process operators with touch screen input.
- 100% standard PC compatible.
- Deploy critical Software solutions right to the floor.
- Access ERP/SCADA system functionality from factory floor.
- Seamless connectivity with central servers and enterprise databases.
- Due to the stainless steel enclosure these units are ideal for food processing environments and associated industries.

## WEIGH LABEL SYSTEMS

The design of Cedar Creek's innovative Weigh Label System is modular; based on our WLS software module and comprising of a touchscreen unit, a scale base/indicator unit and a high spec industrial printer.

All Touch Screen Computers are visible on the network; enabling product specifications, label formats and order data to be downloaded simply and quickly. Production data is made available enterprise-wide in 'near real time'. Order entry is provided for specific customer product requirements.

The Weigh Label System can be stand-alone for single users or networked for multiple station requirements. Remote management is also provided to edit, manipulate and report on production.

- Constructed of stainless steel and suitable for food production and extreme and rugged condition areas.
- Designed to be used in line with existing conveyors.
- Available in manual, piece-mode and fully automatic configurations.



## MANUAL CARTON WEIGH LABEL STATION

- The operator selects the product being processed which is then weighed and a label is printed.
- The operator manually applies the label.
- The software can operate in any three modes "cut piece", "carton" and "mixed mode"; In Mixed mode, the same station weighs and labels each individual piece into a carton, then aggregates the piece data before producing a carton label.
- Choice of printers.
- Generally 60kg base with 20 gram increments.

## PIECE MODE CARTON WEIGH LABEL STATION

- Used for piece mode weighing requiring increments of 5 grams or less.
- Comprising of scale and indicator and a Harsh Environment Touchscreen Computer (complete with Cedar Creek software).
- Industrial label printer with optional stainless steel cover.
- Normally 15 or 30 kg capability.



## AUTOMATIC CARTON WEIGH LABEL STATIONS

- Designed for an automated environment and integrates with existing systems.
- Either stop-start or in-motion weighing.
- The carton is weighed and then automatically labelled with a compliant label containing all variable data.
- Optional verification scanners can be fitted to validate barcode readability.
- Interfaces seamlessly to Cedar Creek's range of Sort Units to control a product's final destination.
- Also available as a check weigh system without labelling.
- Optional carton merge and sort units available.



### M-Series Weigh-In-Motion Systems

#### Additional Features:

- Impressive production speed of up to 30 cartons / crates per minute.
- Ability to run a mix of carton and crate sizes without any set up changes required.
- High performance labelling unit incorporating an industrial print engine with a large 300mm label roll capacity.
- Durable and hygienic design built to withstand the rigours of the Food Processing industry and tolerant to hygienic wash downs.
- High quality parts utilised to ensure excellent mean time between breakdowns.
- Reliable simple design for ease of maintenance.



## CARTON MERGERS AND SORT UNITS

- Designed for use with Cedar Creek's Automatic Carton Weigh Stations.
- Input Merge Units can accommodate up to three input lanes producing one output lane.
- Output Sort Units allow carton control in three possible directions.
- Can be used stand-alone or with existing systems.
- Simple in design.
- Raising tractor feed diverts cartons quickly and safely when required.
- Rugged stainless steel construction with compact footprint.



### KEY BENEFITS

- Automatic weighing and compliant labelling of cartons.
- Utilises Cedar Creek's innovative software system to weigh, label, verify and sort a variety of products and cartons; enhancing your productivity and keeping you in compliance with the latest labelling requirements.
- Automatic recording of transaction data.
- Interfaces available for many ERP systems.
- Rugged stainless construction, high speed, quality printing and accurate weighing are all standard features
- Maintains production in the event of a network failure
- Use of high quality industry standard components means downtime is minimised.

Copyright © 2008 Cedar Creek Company Pty Ltd

SOFTWARE AND HARDWARE SYSTEMS THAT ADD TO YOUR BOTTOM LINE



**CEDAR CREEK**  
COMPANY PTY LTD

#### AUSTRALIA

11/62 Bishop St,  
Kelvin Grove, QLD, 4059  
Australia  
T: +61 7 3356 0999  
F: +61 7 3356 2366  
E: salesenquiries@cedarcc.com.au  
www.cedarcc.com

#### NEW ZEALAND

Suite 3, Level 1  
93 Dominion Rd,  
Mt Eden, Auckland 1030  
New Zealand  
T: +64 9 630 5081  
F: +64 9 630 5091  
E: salesenquiries@cedarcc.co.nz  
www.cedarcc.co.nz

#### CHILE

Mons. Nuncio Sotero Sanz 55,  
p. 7 Providencia, Santiago de Chile  
T: +56 2 499-4400  
F: +56 2 499-4402  
E: info@cedarcc.cl  
www.cedarcc.cl