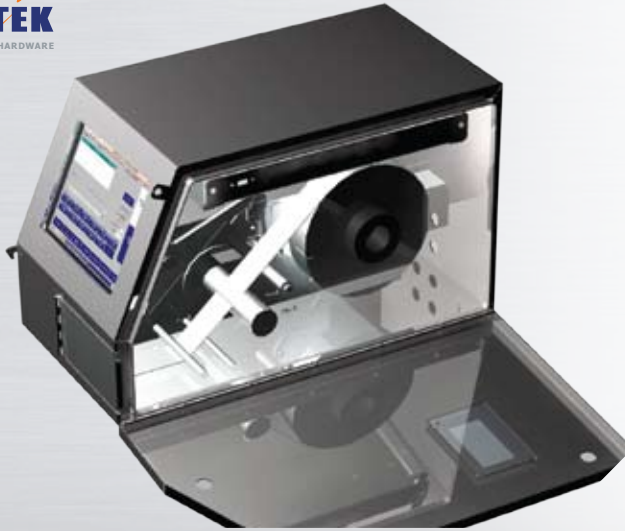


INFORMATION SHEET



CEDAR CREEK COMPANY



Printerm's modular design provides features and capabilities that are truly scalable

Printerm Systems

SWL100

HARDWARE SOLUTIONS FOR

- Meat Processing
- Fresh Produce Processing
- Other Perishable Food Processing

KEY AREAS OF FOCUS

- Increase production efficiencies
- Complete traceability outcomes

SASTEK - Printerm Systems

Sastek's Printerm range of weigh label systems are renowned as the most robust and functionally rich systems for the food processing industry.

Always responding to the demand of our target industry, Sastek has identified a need for a lower throughput solution for the smaller boning rooms, offal rooms and manufacture processing lines in smallgoods processors where production levels are reduced but the value of the product is still high.

The SWL100 system compliments the existing model range by offering a compact, low cost and yet functionally complete weigh label system.

Fully integrated into Sastek's P6 supervisor system and FoodChain, the SWL100 can be deployed in a stand alone mode or as part of an enterprise-wide production recording system.

The SWL100 system compliments the existing model range by offering a compact, low cost and yet functionally complete weigh label system.

Fully integrated into Sastek's P6 supervisor system and FoodChain, the SWL100 can be deployed in a stand alone mode or as part of an enterprise-wide production recording system.



Robust carton weighing systems for food production environments



PRINTERM CARTON WEIGHING SYSTEMS ARE PURPOSE BUILT FOR FOOD PROCESSORS:

AQIS Compliant

AQIS approved code of practice for the printing of Australia Inspected (AI) stamp onto labels for export product. Includes Halal stamp, plus True Type Font (TTF) for foreign language printing and other market compliant registrations.

Traceability

Every printed label has a unique number within the barcode and is recorded onto a production database for traceability and product tracking functions.

Robust

IP67 rated. The highest uptime of any production system in its class. Designed and manufactured for harsh meat and perishable food production environments.

Production Recording

Online integration with Sastek's foodChain Inventory module. ODBC compliant for integration to other production and ERP systems.

Systems Integration and Automation

Built-in drivers for connectivity to scales, labelers, PLC's, SCADA, conveyor and automated sortation systems, x-ray units, probes, inkjet printers etc. Links all production devices into one integrated production system.

Production Dates

Records both production date and use by date for individual cartons (units). Enables product aging, stock rotation, shelf life management.

GSI

User friendly label design programme allows user to design label format including GSI barcode standards.

SWL100 SPECIFICATIONS

Harsh Environment

Computer (HEC)

- 6894 motherboard 1.2Gb CPU
- 512 Mb ram
- 80Gb HDD
- 10" VGA active colour touch screen

Labeller

- Intermec PF4i thermal direct

Speed

- 4-5 cartons per minute. 3kg - 30kg

Construction

- IP67 with 304 grade stainless steel for all housings and waterproof connectors

THE COMPLETE PRINTERM RANGE

SWL 100

INPUT: Fixed scanner or manual entry
LABELLING: Manual application
PRODUCTION SPEED: 4 cartons per minute

Manual

INPUT: Fixed scanner or manual entry
LABELLING: Manual application
PRODUCTION SPEED: 6-8 cartons per minute

Semi Auto

INPUT: Fixed scanner or manual entry
LABELLING: Automatic application
PRODUCTION SPEED: 10-14 cartons per minute

Auto Wrap Labeller

INPUT: Fixed scanner
LABELLING: Wrap labelling for adjacent corners
PRODUCTION SPEED: Up to 25 cartons per minute

Auto End on Labeller

INPUT: Fixed scanner
LABELLING: Auto to cartons & crates on same line
PRODUCTION SPEED: Up to 25 per minute

Auto Tamp Labeller

INPUT: Fixed scanner
LABELLING: Automated
PRODUCTION SPEED: Up to 30 per minute

Retail System

INPUT: Batch based for a run
LABELLING: Manual or Auto EAN-13 barcodes
PRODUCTION SPEED: 8-25 per minute

Sorting System

INPUT: Fixed scanner
LABELLING: N/A
PRODUCTION SPEED: Up to 33 per minute



**CEDAR CREEK
COMPANY**

CEDAR CREEK COMPANY PTY LTD

11 / 62 Bishop St, Kelvin Grove, Queensland 4059, Australia // phone: +61 (0) 7 3356 0999 // fax: +61 (0) 7 3356 2366

47 Princes St, Onehunga, Auckland, New Zealand // phone: +64 (0) 9 634 4075 // fax: +64 (0) 9 634 4087

Pres E. Frei M.9950, Santiago de Chile // phone: +56 2 499 4400 // fax: +56 2 499 4402

